

Matheo Irazabal

UCLA Fast Track Student of the Month

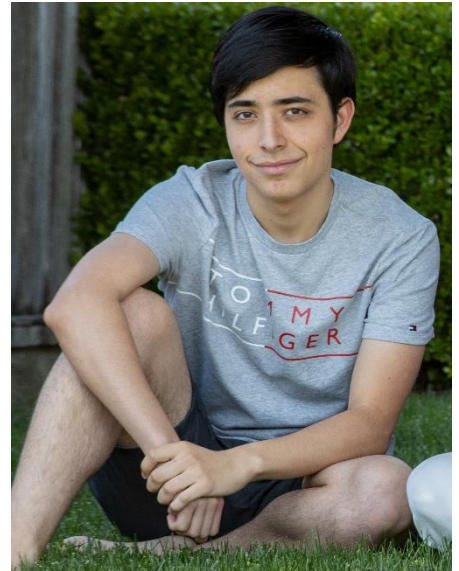
Hometown: San Jose, California

High School: Prospect High School

Interests Outside of School: Music, Reading, Hiking, Puzzle Games

What made you choose Electrical Engineering?

I've always wanted to be an engineer since I was little. As I went more and more through high school, I realized that I was more interested in the physics and math related aspects of engineering. Additionally, I wasn't that interested in the computer science part of other types of engineering like Computer engineering, so overall, that made me choose Electrical Engineering.



Why did you choose UCLA?

I chose UCLA because of the beautiful campus and great environment. When selecting at schools I was looking for one that was just far away enough from my home but close enough to be able to visit home quickly on holidays. On top of this, I knew that UCLA had an extremely good engineering program and was drawn to the Fast Track program. So far, I haven't been proven wrong.

What have you done at UCLA?

While I have only been at UCLA for less than a year, I have already started involving myself in many things, both career and non-career centered activities. First, I am currently involved in IEEE Micromouse, where we design an autonomous, self-driving robot. This has helped me become more familiar with programming in C and PCB design. In addition to this, I have also started doing some research on Diffractive Deep Neural Networks in the Howard Hughes Medical Institute and National Science Foundation Undergraduate Research Program. Some non-academically focused activities that I also do is the UCLA Symphony as well as the Bruin Chamber Music, where I am involved in several chamber groups as a pianist and violinist including, but not limited to, piano trios, piano quintets, and string octets.